

<http://www.sanseisogo.co.jp>



Sansei Co., Ltd.

■Yokohama headquarters

3-1-28 Minamiyamata, Tsuzuki-ku, Yokohama
224-0029

TEL:045-594-3851 FAX:045-590-4875

■Fukuoka Sales Office

2-4-10 Higashinaka, Hakata-ku, Fukuoka
812-0892

TEL:092-483-3456 FAX:092-483-3457

■Kita-Kanto Sales Office

1568 Yanaze-machi, Utsunomiya city, Tochigi
321-0933

TEL:028-612-5480 FAX:028-612-5490

■Taiwan Sansei International Inc.

10468, 11th Floor, No. 318, Taipei Sung Chiang 6

TEL: (02)25429770 FAX: (02)25429279



ITE Co., Ltd.

■Yokohama Data Center

■Fukuoka DC Data Center



Corporate Profile



Sansei Co., Ltd.

Sansei offers 5 business domains and three skills/resources with optimum solution

5 business domains

Medical and IT consulting, Medical device sales

Back-up power system

Medical construction and facility integration

IT system designing and operation

Maintenance



3 skills

Technical capability

Environmental contribution

Independency

What a “Medical and IT professional” can generate?



“Medical”and“IT”requires high specialty,
please leave it up to our professional team, Sansei.

“Medical”which protects people’s life and health and“IT”which increases the efficiency of information are always a required high specialty. Sansei has been absorbing leading-edge technology in“Medical”and“IT”, and we have been accumulating the capability and“know-how”to reply to a customer’s requirement.

It is very difficult to collect and understand deeply everything about “Medical” and “IT”, which are growing rapidly technical innovation, for customers. Sansei believes it is necessary for the needs of hospitals need to be suggested optimum medical equipment, system support to increase the efficiency and

maintenance. Sansei can do this kind of support and propose a wide range of solutions since we are an independent company and organize professional team.

Correspondence to“Environment”can generate new added value for companies. Sansei has been suggesting“Society contribution”as one of our company policies, and we are making efforts to improve better environment. We propose it though facility integration with environmental friendly technology, we would like to help to improve our customers’value and play the role of a valuable company in our society.

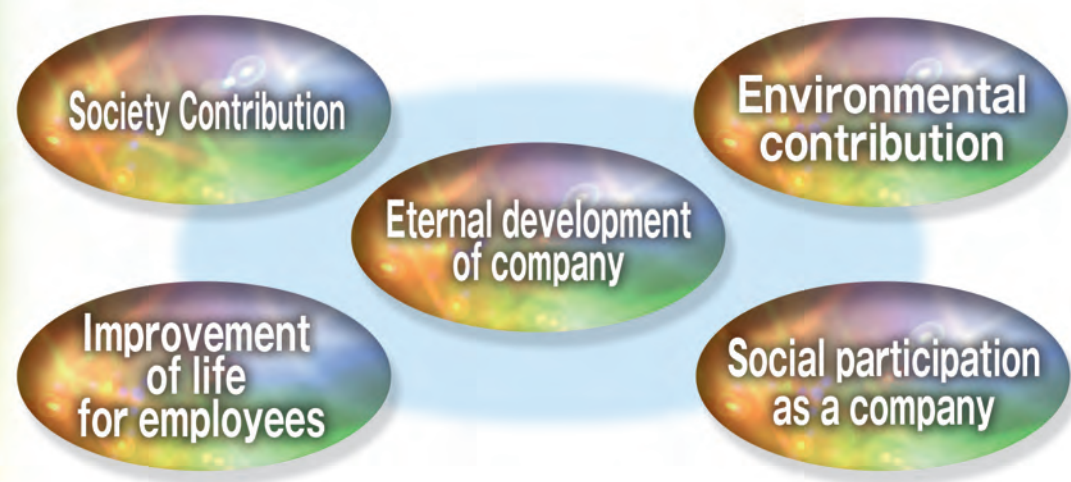
Sansei respects the capability of each Sansei member.
By every Sansei person seek to improve and activate their capability, we will realize the 5 missions.

Reliance + Relief

What is the solution
to realize reliance
and relief?



One important role of Sansei is to provide leading-edge technology and make a contribution to society and the global environment.



- | | |
|-----------------------------|---|
| Society Contribution | Sansei contributes to our society through creating suitable environment and equipment installation by the development of medical technology. We can support creating a better working environment for medical personnel through flexible and high quality construction. |
| Personnel training | Sansei believes "Employees need to be people who are trustworthy from the perspective of colleagues and customers". We are trying to improve good human relationships, personalities and man-power development. |
| Development of new products | Sansei has been offering new products, design, construction and development that answers social needs with leading-edge technology which Sansei originally has. Our team has special "know-how" and provides service. |
| Environmental Contribution | Sansei has introduced environmental programs positively. We are trying to contribute to society and the global environment through offering an eco-friendly integrated facility and technology. |
| Achievement of budget | Sansei believes the best way to be flexible against this changeable economical environment is to set a sales strategy based on sufficient information and analysis and try to reach the sales target based on the sales strategy. |



Medical & IT Consulting, Medical device distribution

Sansei supports hospitals for the effective operation from both the medical and IT sides.

It cannot be called consulting to just propose suitable medical equipment. Sansei is accumulating abundant know-how about medical apparatus introduction. Sansei thinks from a different point of view so was to increase efficiency, such as low cost, energy saving and IT solution. Also, we are hoping to support hospitals' total design for long term, such as 10 or 30 years later, management and operation.



Medical device distribution

- X-rays CT
- X ray bone mineral analyzers
- Ultrasonic diagnostic equipment
- MRI
- X ray diagnosis device



Medical Consulting

- Medical equipment proposal
- Conducting wire design
- Efficiency improvement for hospital management
- Energy-saving proposal

IT Consulting

- Server room design
- Network design
- Digital monitoring system proposal

Backup power system

Supply stable power that does not stop for even 0.1 of a second

In order to maintain the performance of medical instruments, it requires a stable power supply, without the influence of voltage fluctuation and the environment. It is very important not to stop the power supply and continue to supply stable power, even if the commercial power supply is cut off. We would like to propose our UPS uninterruptible power supply as a solution for the power supply problem, such as the Tohoku Earthquake, a blackout, a thunderbolt a lightening strike and so on. The UPS uninterruptible power supply realizes a redundant configuration simply, and contributes to the development of hospitals management strategy with the home-generating electricity system which can be mobile.



Backup power system

- UPS uninterruptible power supply
- Private power generator



Founded in 1961, Head-office Germany Herborn Rittal is one of the leading total solution providers of the system. Rittal operates 19 factories, more than 60 subsidiaries, 70 agencies and more than 150 sales offices globally.



Founded in 1980, Head-office Hamburg, Germany ABZ manufactures power generators, diesel or gas drives, by customers' needs and exports to 70 nations.

Integrated construction and integrated facility

Sansei provides the solution, which maximizes the performance and convenience of medical devices for users.

Sansei has advanced expertise and can provide a solution that maximizes the performance and convenience of medical devices for users. Sansei is specialized in the field of "Medical" and "IT", we can achieve integrated medical construction and medical facility, which can answer the future needs of hospitals, such as designing and constructing a special room for expensive medical devices, a server room that can support a hospital's IT.



Plan

- Energy saving proposal
- Space saving

Sansei has know-how of integrated construction and facility, and we provide a total solution of design, construction and operation management service, which specialized in "Medical" and "IT" for our customers.

Offering consistent solution

Maintenance

- Environmental Measurement
- Repair Proposal

Construction

- Quick Delivery
- Cost Saving



Medical

Design and construction of a new-building clinic
Repair work of hospitals
Design and construction of a special room for advanced medical equipment
Electromagnetic wave shielding construction
Design and construction of a clean room

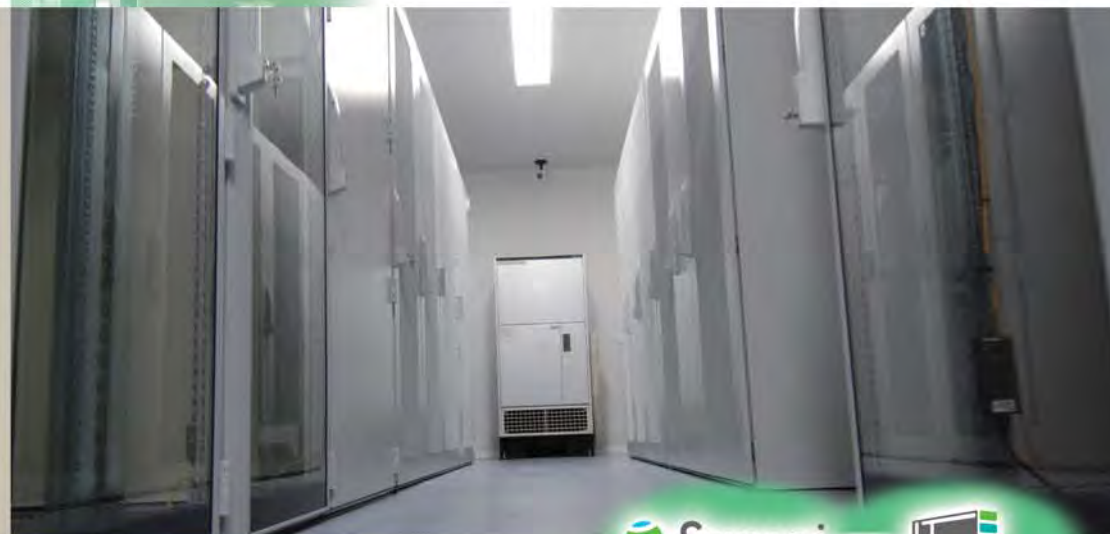
IT

Design and construction of a datacenter
Design and construction of a server room
Design and construction of networking

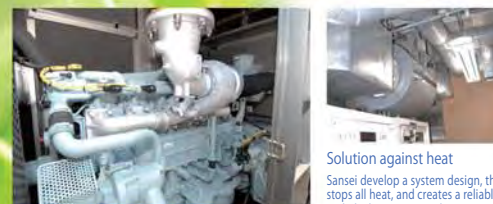
IT system configuration and operation

Maintenance of information security apparatus, system integrator of an IT system that ensures two safeties

Sansei believes it is very important to keep on working the whole system in the optimal state. If a system does not move as usual, various businesses will be overdue and stop. Sansei offers a safety operation system that does not sleep as well as security of information. We consider one-step beyond with incorporated company ITE, which is an IT specialist.



Sansei



Solution against heat

Sansei develop a system design, that stops all heat, and creates a reliable and ideal environment by using a cabinet integral-type cooling system and designing exclusive air-conditioning machines.

Energy and space saving

Design of rack
The air-conditioning design accompanying energy saving

Power supply

Proposal of uncut power supply equipment
The power supply secured emergency power for servers
The power supply secured emergency power source car
High-pressure facility design
Power generator

Security

Fingerprint authentication
Physical access control system
Security Camera
Network supervising system

Solution against electromagnetic wave

Design and construction of shield room for 70dB or more.
Solution against high frequency

Networking

LAN construction
Optical fiber construction
Design of network system configuration

Earthquake-proof equipment

Design/Propose quake-absorbing mount
Design/Propose earthquake-proof mount
Earthquake-proof solution, etc.

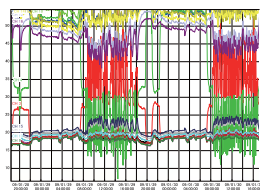
Digestion

Design/propose digestion system

Maintenance

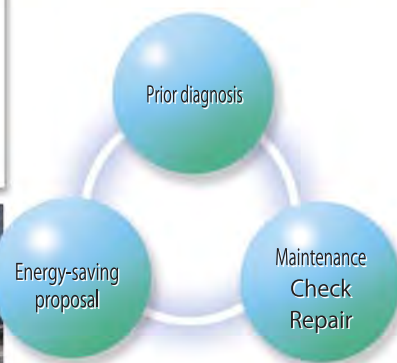
Sansei provides total support that upgrades the reliability in order to make relief “usual”

Management of the medical equipment that continues to improve the performance and data center/server room requires a suitable operation environment for higher technology and apparatus. The total support that Sansei offers integrative support to hospitals as one scheme for all “maintenance”, “check”, the “equipment surveillance”, and “inspection repair” to the hospitals’ apparatus and system. It is possible to choose the optimal service in accordance with a customers’ hope and system matter from various supports. If you are considering laborsaving and an increase in the efficiency of facilities maintenance, please consult with Sansei.



Environmental measurement

Aiming at energy saving, the shift of a peak load, fine diffusion to load and control, Sansei is preparing the organization that visualizes temperature, humidity, and electric power demand. The optimal environmental creation becomes possible with the establishment of an environmental measurement organization.



Company Profile

Company Name: Sansei Corporation
 Yokohama HQ:3-1-28, Minamiyamata, Tuzuki-ku, Yokohama, Kanagawa 224-0029 Japan
 TEL: 045-594-3851
 FAX:045-590-4875
 Fukuoka Branch Office: 2-4-10, Higashinaka, Hakata-ku, Fukuoka-shi, Fukuoka 812-0892 Japan
 TEL: 092-483-3456
 FAX:092-483-3457
 Kita-Kanto Sales Office
 1568 Yanaze-machi, Utsunomiya city, Tochigi 321-0933
 Tel:028-612-5480
 FAX:028-612-5490
 Foundation: 11th of November, 1994
 Capital: JPY 86,500,000
 License: Specific construction work business The general Kanagawa governor permission (specification) No. 63792
 Plumbing business The Kanagawa governor permission (general) The general No. 63792
 Electric work business The Kanagawa governor permission (general) The No. 63792
 Advanced managed-medical-care apparatus The No. 111280086
 Industrial wastecollection transport industry The No. 05600150534 antiquary No. 451930004136
 Freezing air-conditioning institution construction place-of-business certificate Authorization number 14-C-014
 First-kind chlorofluorocarbon collection agency Xin(Air-water) No. 1-1422
 Eco-action 21 Attestation and registration number
 General construction business
 General facility business
 Equipment for medical treatments and diagnosis
 Design and construction of a data center and a server room,
 Medical and IT facilities total-maintenance business
 Advanced managed-medical-care apparatus trading business

Work content

Related companies



Partners



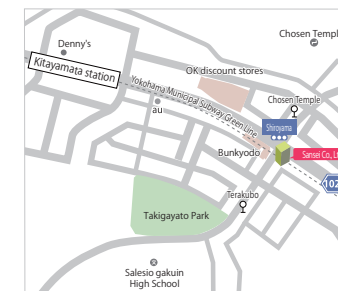
Rittal



ABZ
 Aggregate-Bau GmbH & Co. KG

Company History

November, 1994 Sansei Integrated Facility Co., Ltd. is established in Yokohama.
 January, 2000 Due to office expansion, it moved to Minamiyamata, Tsuzuki-ku, Yokohama.
 April, 2009 Company name changed to Sansei Co., Ltd.
 May, 2009 Advanced managed-medical-care apparatus trading permit (Permission number 111280086)
 January, 2010 Transfer to Hakata-ku, Fukuoka for the Fukuoka office expansion
 October, 2011 Recognize to the Yokohama area contribution company
 October, 2012 Taiwan office is established in Taipei city
 October, 2012 ISO27001:2006 certified (registration number JMAQA-S119)
 December, 2012 ISO9001:2008 certified (registration number JmqA-2507)
 October, 2013 Kita-Kanto office is established in Utsunomiya.



CSR Certification

